

# 2019



*the best*

[www.namibiasafaricorporation.com](http://www.namibiasafaricorporation.com)





# Profile

## NAMIBIA SAFARI CORPORATION

Namibia Safari Corporation is a hunters' paradise, situated in the malaria free Khomas region of central Namibia. The hunting lodge is a mere two hours' drive out of Windhoek, the capital city. Vast plains and rough, rocky mountains teaming with the most superb African game will thrill you. From the majestic Kudu to the delicate little Duiker, the choice of trophies is all yours.

The family owned hunting ranch stretches over 167 miles<sup>2</sup>. The diversity of the terrain supports a large variety of antelope, African cats and birds. More than 20 different species of game can be hunted, including leopard, as well as Hartmann Zebra and Klipspringer, that are both endemic to Namibia.

Hunting begins either on foot or by hunting vehicle. However, if fresh tracks or animals are spotted, stalking will continue on foot. Rifles, shot guns and hunting bows may be used. After slaughtering, trophies are professionally cleaned, treated and packed.

Luxury accommodation is provided in typical African Safari style thatched roof buildings, which create an unique comfort for hunters as well as non-hunting clients. Amenities include en-suite rooms with heaters and fans, Wi-Fi and daily laundry service.

At night, all gather around a crackling fire at the outdoor fire pit to experience the night sounds of the African bush, and locate the Southern Cross in the sky! After toasting to the successes of another great hunting day, a multiple course dinner will be served in the dining area, or outside. Guests will feast on traditional home cooked meals, or barbeque dishes. The best South African wines will be enjoyed, as well as complimentary local beers and sodas.

Hemmingway said it best "I never knew of a morning in Africa when I wake up that I was not happy". There are few places or experiences in the world that will put everything in your life into perspective than being on safari. Some of the most enduring memories and friendships are created on safari.

PH and owner Jaco van der Merwe and his team invite you, your family and friends to Namibia Safari Corporation in Namibia for an unforgettable African safari.

*The Best!*



# Accommodation



# Community Involvement

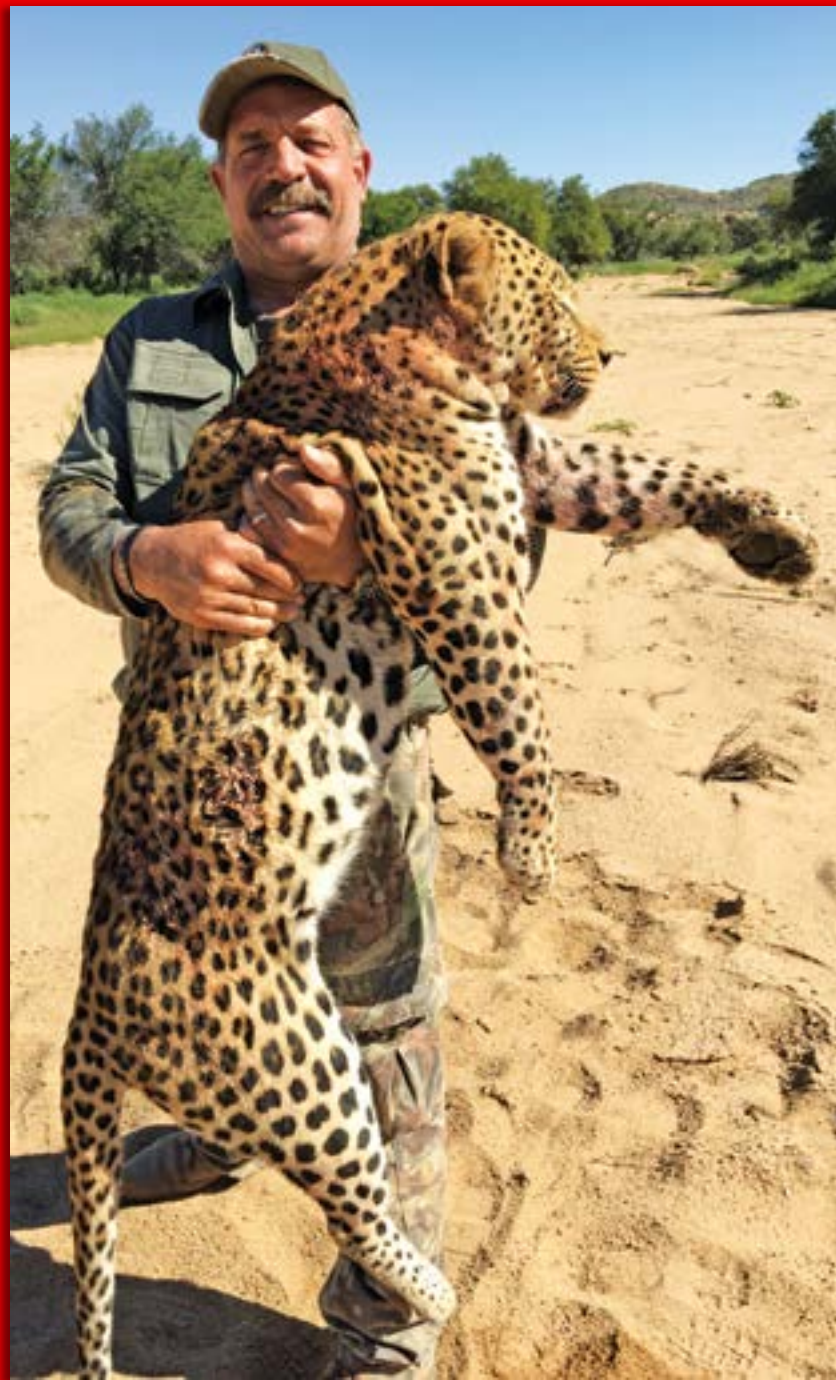
## WE LOVE ROLLING UP OUR SLEEVES & HELPING OUT OUR NEIGHBORS

At Namibia Safari Corporation we are proud to fulfill our social responsibility. We are committed to the upliftment of local communities, the well-being of our employees, their families and especially their children, and the schools that they attend.

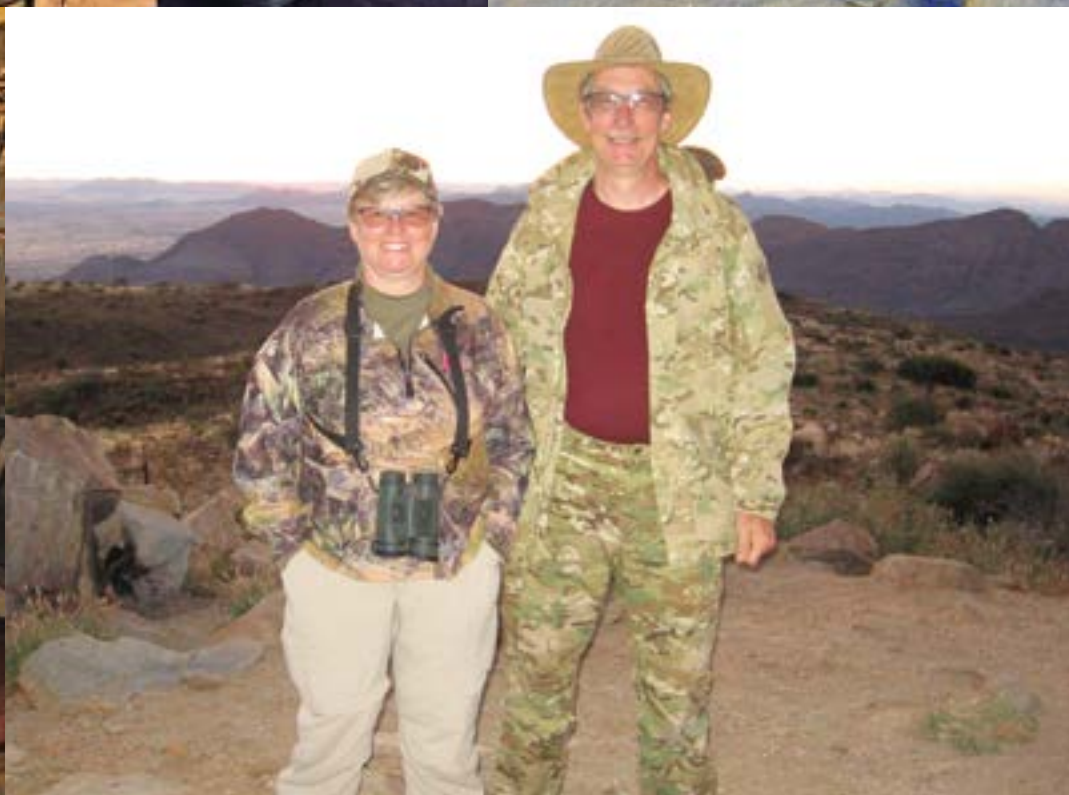
We want to thank all our clients that assisted us in honouring our commitment by bringing along SCI Blue Bags full of shoes, clothes, toys, medical supplies, stationary and many more surprises. Also the boxes of Bibles and candy that were eagerly accepted by many small and big hands.

You made a big change in the life of every child of the Klein-Aub Primary school, where most of the donations were handed out. We are convinced that you will be blessed for all these blessings that you bestowed on many in need.

Our latest project is assisting with baby clothes for babies in need that are born at the St Mary's RC Hospital in Rehoboth.



















































# *We pride ourselves on our photographic safaris*

Our different packages include:

- Sossusvlei & Sesriem
- Swakopmund on the Namibian coast
- Etosha National Park
- Erindi Game Reserve
- Victoria Falls, Zimbabwe
- Tiger fishing on the Okavango & Zambezi Rivers
- Chobe National Park
- Damaraland

Tours can be customized to suit the needs of a particular group and the time available.

The following rates will apply:

1 to 2 people will be US\$ 540 per person per day

3 to 4 people will be US\$ 480 per person per day

More than 5 will be US\$ 420 per person per day.

Price includes:

- Accommodation
- Transport by motor vehicle
- Entrance fees to game parks & heritage sites
- Meals & soft drinks

Price excludes:

- Alcoholic drinks
- Laundry services
- Personal Expenses.



*Guided Tours to Etosha National Park and other places of interest are readily arranged.  
Hunting Safaris can be combined with photo graphic safaris.*





*Daily Rates & Trophy Fees*  
**2019 / 2020**

TROPHY FEES	US\$
Baboon	100
Black Wildebeest	1450
Blesbok	600
Blue Wildebeest	1100
Caracal	520
Cheetah	3100
Common Impala	640
Damara Dik Dik	2100
Duiker	330
Eland (Cape)	2700
Gemsbok	770
Giraffe	2600
Jackal	100

Any specie not listed can be added upon special request.

DAILY RATES	US\$
1 Client / 1 Guide	420
2 Clients / 1 Guide	320
Observers / non hunters (per person)	150
Rest Days	150

**Please Note:**

Value Added Tax of 15% is included in daily rates.

Daily rates are charged per night spent in Camp.

TROPHY FEES	US\$
Warthog	520
Waterbuck	POR
Klipspringer	1300
Kudu	1500
Leopard (see below)	-
Red Hartebeest	720
Spotted / Brown Hyena	1150
Springbok	460
Steenbok	400
Zebra (Burchell)	1070
Zebra (Hartmann's)	920
Rifle Renting per day	40
Per bullet (minimum 20 bullets)	4.00

**\* Leopard Hunting can only be done once a tag is obtained from MET.**

Leopard hunts will only be done as a package for US\$ 23 000, which includes:

- All pre-baiting
- All zebra/horse or donkey baits
- 14 hunting days for one hunter
- A leopard tag

If the leopard is not shot or not wounded, the hunter will be refunded with US\$ 5000.

# The team

Jaco & Marinda, S.D., Nina-Mart & Maryke van der Merwe



Jaco, Elrick, Justin, Hendrik, Efraim, Marinda, Renate, Annemarie, Frieda, Josephine



Santjie & Hennie Scholz



Packages  
2019

1. THE BIG ONE

\*7 Hunting days, 8 nights, include:

- 1 x Kudu
- 1 x Gemsbok
- 1 x Blue Wildebeest
- 1 x Warthog
- 1 x Hartmans' Zebra

TOTAL Package Price: \$5,500 USD

4. NAMIBIAN CLASSIC

7 Typical Namibian Animals

\*8 Hunting days, 9 nights, include:

- 1 x Kudu
- 1 x Gemsbok
- 1 x Cape Eland
- 1 x Red Hartebeest
- 1 x Hartmans' Zebra
- 1 x Springbok
- FREE cull Gemsbok

TOTAL Package Price: \$8,250 USD

2. THE STARTER PACK

\*7 Hunting days, 8 nights, include:

- 1 x Duiker
- 1 x Red Hartebeest
- 1 x Gemsbok
- 1 x Blue Wildebeest
- 1 x Springbok
- 1 x Hartmans' Zebra

TOTAL Package Price: \$4,500 USD

5. THE FRIENDS HUNT or  
FATHER/CHILD SAFARI

\*7 Hunting days, 8 nights, include:

- 2 x Kudu
- 2 x Gemsbok
- 2 x Red Hartebeest
- FREE Jackal if spotted while hunting

TOTAL Package Price: \$4,200 USD per hunter

3. THE GATEWAY

\*5 Hunting days, 6 nights, include:

- 1 x Gemsbok
- 1 x Hartmans' Zebra
- 1 x Blesbuck
- 1 x Duiker

TOTAL Package Price: \$3,900 USD

6. LETS GET YOU STARTED

\*5 Hunting days, 6 nights in camp, include:

- 1 x Gemsbok
- 1 x Warthog
- 1 x Springbok
- 1 x Baboon

TOTAL Package Price: \$2,000 USD



Group Leader  
hunts for **free**

Book a hunt for a group of 4 hunters, excl. yourself, and you, the group leader will hunt for **free\***

(Terms and conditions apply)





# IMPORTANT SAFARI INFORMATION

to help you prepare for your hunt

1.

VISA REQUIREMENTS/INOCULATIONS

No Visa is required for entry into Namibia for USA citizens. You will need only your passport. No inoculations are required. We advise our clients to ensure that their tetanus shots are up to date. Although our hunting concessions are not in malaria areas, it is good to take precautions against malaria should you be visiting Etosha National Park or the Zambezi region. We carry first aid equipment. It will be wise to bring some basic medicine for headaches, colds, flu and stomach ailments. Obviously, should you require prescription medication, bring that with you. Make sure you have a high factor sun screen lotion with you.
2.

RIFLE IMPORTS

Namibia is one of the most hunter friendly countries in Africa. You are allowed to bring a maximum of three rifles, with an allowance of a maximum of 80 rounds of ammo per rifle. A rifle in 300 WIN magnum range (300 WinMag, 338, etc) will be suitable for any African game up to Eland. You will be required to fill out a Rifle Import/Export Application, which must be handed to the police at the airport. At the bottom of this application form, there is a table to be filled out. Some of the questions are a little confusing, this is what they require:

Select a multi-purpose, expanding bullet. Bullets like Barnes X, Swift A Frame and Trophy bonded are excellent for most African animals.
3.

CLOTHING REQUIREMENTS

Most important is a pair of well broken in, ankle length boots. Bring a broad rim hat to protect your neck and ears against the sun. Bring something warm for the evenings and early mornings, especially during our winter (June, July and August). It gets cold at night! To protect our clients, we suggest that they hunt
4.

CAMERAS, ETC

Power supply is 220 volt. If you will require recharging, make sure you bring an inverter. Make sure your camera bag is dust proof. Bring plenty of spare batteries or more than one rechargeable battery. Bring extra memory cards.
5.

SPECIE AVAILABILITY

Not all species are available in all camps. Best is to let us have your wish list and leave the camp decision to us.
6.

COSTS

When you calculate costs according to our price list, you can rest assured that there will be NO hidden costs. What you see is what you will pay. Please keep in mind that daily rates are charged per night spent in camp.
7.

FIRE-ARM REQUIREMENTS

  - A minimum caliber in the range of 300WinMag is required.
  - Calibers smaller than this minimum can be used on certain species, but will not be allowed on larger species such as Kudu, Eland, etc.
  - Clients are responsible for the supply of their own ammunition.
  - It is recommended that a soft rifle bag, in addition to the rifle case, be brought along for transport between hunting.
  - We do have rifles for hire should you not bring your own. (US\$ 40.00 per day and US\$ 4.00 per shot.)
  - Hunters will be liable for any damage to a rented rifle or scope.
8.

DONATIONS

  - No exchange of animals will be possible
  - No refund on donated animals not taken



- SAFARI CONFIRMATION:
1.

A deposit of US\$ 1000.00 per hunter, will be payable to confirm any booking. Payment must be made either in cash or electronic transfer.
2.

Should the safari be cancelled for a period less than 180 days upon arrival, no refund will be made, where as a full refund (minus 10% admin fee) will be made for cancellations longer than 180 days in advance. If a leopard hunt is cancelled within 30 days or less before arrival, the client will be liable for the full payment of the hunt.
3.

We reserve the right to change any terms, conditions and prices without notice. **Rates at the time of the hunt will apply.**
4.

Please note that should you cut the safari short due to personal circumstances, in other words leave earlier, you will be charged for the full length of the safari.
- LIABILITY:

1.

We have taken the necessary precautions to ensure the safety and good health of clients, therefore no liability will be accepted for injury, illness and/or losses incurred during or after the safari.

- REST DAYS
- Rest days should be announced before the beginning of the safari. During a rest day, hunters will stay at camp. No sightseeing or hunting for predators will be done. A rest day is for our senior hunters who need to take a day off in the middle of the safari, or hunters that do not hunt on Sundays. Rest days cannot be announced during the safari.
- DIETARY REQUIREMENTS
- If you are suffering from diabetes or are gluten intolerant, please let us know well in advance so that we may stock up on the necessary foods.

# TERMS AND CONDITIONS

- DAILY RATES INCLUDE:

1.

The services of a licensed professional hunter

2.

All airport and camp transfers.

3.

All pre-hunt preparations.

4.

Tracker, skinner and camp staff.

5.

Luxurious accommodation

6.

All meals and beverages

7.

Daily laundry services.

8.

Skinning and field preparation of trophies.

9.

Four wheel drive hunting vehicle and equipment.

10.

Delivery of trophies to a shipping agent/ local taxidermist.

11.

Value added tax. (15% on daily rates only)

12.

Transfer from airport to hunting camp & back.
- DAILY RATES DO NOT INCLUDE:

1.

Trophy fees.

2.

Gratuities to PH, trackers, skinner and camp staff.

3.

Transport costs from abroad to Windhoek International Airport and Airport taxes.

4.

Cost of side trips.

5.

Personal expenses.

6.

International phone calls and faxes

7.

Insurances and medical expenses of any kind

8.

Taxidermist fees, packing & shipping of trophies

# GENERAL PACKING LIST

Quantity	Item	Packed
1	Wind proof jacket / Thick padded jacket – No polar fleece please (Grass seeds stick to it)	
1	Sweater to wear at camp	
1	Pair of warm gloves	
2-3	Long sleeve shirts (No bright colours please)	
2-3	Pairs of long pants	
4	Pairs of socks	
4	Pairs of underwear	
1	Well worn in lightweight leather hunting boots (No tennis shoes or boots with material top)	
1	Comfortable shoes to relax around camp at night	
1	Hat for protection against sun (The sun is bad)	
	Good sun block, lip ice and sun glasses	
	Malaria tablets if you go up to the Caprivi strip	
	Toiletries	
	Personal medication	
	One small bag or backpack to take with you each day on the truck.	
	Rifle with ammunition, ammunition pouch or belt and rifle cleaning kit	
	Soft rifle bag for travelling or extra protection for the rifle and easy removable lens covers for your scope. (To protect it against dust)	
	Taxidermy tags with personal details	
	Video camera and camera with extra batteries.	
	Good quality flashlight.	
	Passport, flight tickets and any other travel documents	
	Copy of your passport to be handed to the PH.	
	Good quality knife	
	Good quality binoculars – 10 X 42 or higher will work	





